

Protection of Gutter and Street Stormwater Drains



'Do it right on site' is a project to help the construction industry protect the environment and achieve the many benefits that come from doing so.

Protection of Gutter and Street Stormwater Drains

What is it?

This refers to placing sediment collection devices around or in the drains down slope of your site to prevent pollutants entering. ***This should not be your only measure.***

Street drain protection is a backup measure to support your on-site controls.

Why is it important?

The environmental impact of sediment such as mud and dirt is significant. They smother animals and plants that live on the bottom of creek beds and make the creeks shallower. This results in the sun's rays heating the water. Many native plants and animals can not survive in this hotter water. Even though mud and dirt are natural they are still serious pollutants that must be prevented from entering our waterways.

What do I need to do?

Before building commences:

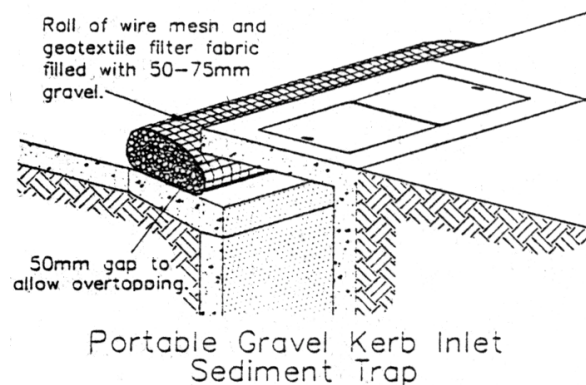
Find the street drains below your work site. Choose the most appropriate method for protection and install prior to commencement of building works. Document these on your Soil and Water Management Plan and ensure staff are aware of its importance.

Installing the controls:

Choose the best down slope control method for your site. Those that collect sediment above the pit are easier to clean but have low storage capacity compared to controls that 'sit' in the pits. Place cones around controls in the gutters or on roads to prevent drivers damaging them.

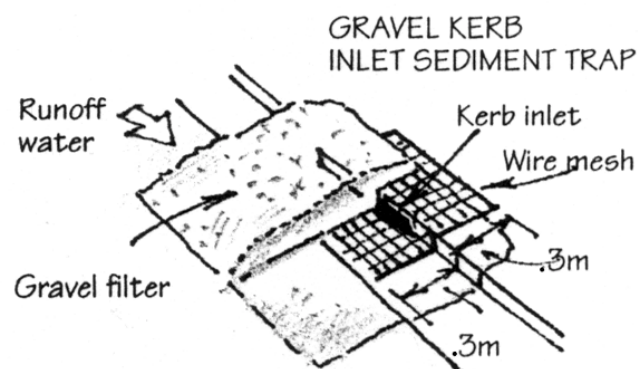
Portable gravel kerb inlet sediment trap:

This trap involves a roll of wire mesh and geotextile filter fabric filled with gravel in front of the kerb inlet. It has the benefit of being portable and easily removed for cleaning. Ensure there is a gap at the top to allow overtopping and prevent flooding.



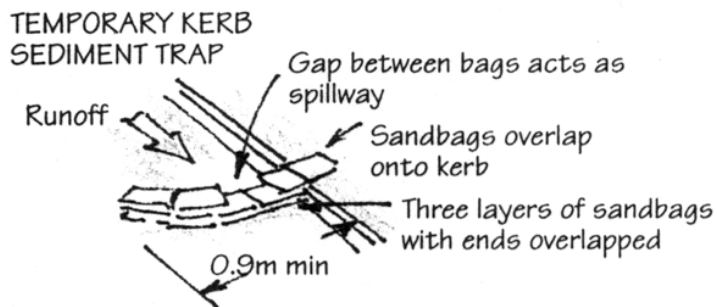
Gravel surface barrier strategy

This method involves placing wire mesh over the drain and placing large gravel upslope of it. The sediment will be filtered out into the gravel with only the clean water entering the stormwater system.



Sandbag kerb sediment trap

Place sandbags in front of flow of water. This will slow down the water enabling sediment to settle out. Two or three of these traps in a row may be required to ensure sediment settles out.



Pit Baskets

There are a range of products that can be placed inside side entry pits that act as baskets or sacks to trap any pollutants that enter. Council permission must be sought before placing any items inside the side entry / gully pit.

Maintenance of the sediment controls:

All sediment collection devices will need to be cleaned regularly to maintain effectiveness. The built up material can be re-stockpiled, used on site or collected by an Earth Moving Company.

Remember:

Everyone has a responsibility to protect the environment. The site supervisor is required to make sure that all workers, including sub-contractors are doing the right thing and all workers are required to notify their supervisors and Council if they see pollution occurring.

It is illegal for any substance other than rainwater to enter the stormwater system. If you do have an accident and pollution occurs you are required by law to notify the Council so that they can work with you to minimise any harm to the environment.

Penalties for polluting the stormwater system range from \$750 on the spot fines to \$1 million and seven years in gaol. Both companies and individuals can be fined.

Council Officers and the EPA enforce the environmental legislation and do routine inspections of building sites. They can issue notices to make companies clean up sites, change the way they are managing the sites and if necessary, cease work. They will attempt to work with you but penalties will be issued if a satisfactory environmental outcome is not achieved.

List of fact sheets available from Council:

1. Diversion of Upslope Water
2. Dust Control
3. Early installation of Roof Drainage
4. Excavation Pump Out
5. Protected Concrete, Brick and Tile Cutting
6. Protected Concrete Delivery
7. Protected Service Trenches
8. Protected Stockpiles
9. Protected Wash Areas
10. Protected Waste Management and Chemical Storage
11. Protecting Vegetation
- 12. Protection of Gutter and Street Stormwater Drains**
13. Protection of Site Stormwater Pits
14. Sediment Controls
15. Soil and Water Management Plans
16. Stabilised Site Access

For further information on preventing pollution from building and construction sites contact your local council:

'Do it right on site' is funded by the Natural Heritage Trust and the Southern Sydney Regional Organisation of Councils – Bankstown, Botany Bay, Canterbury, Hurstville, Kogarah, Marrickville, Randwick, Rockdale, South Sydney, Sutherland Shire, Waverley and Woollahra.

THE DRAIN IS JUST FOR RAIN



Southern Sydney Regional Organisation of Councils